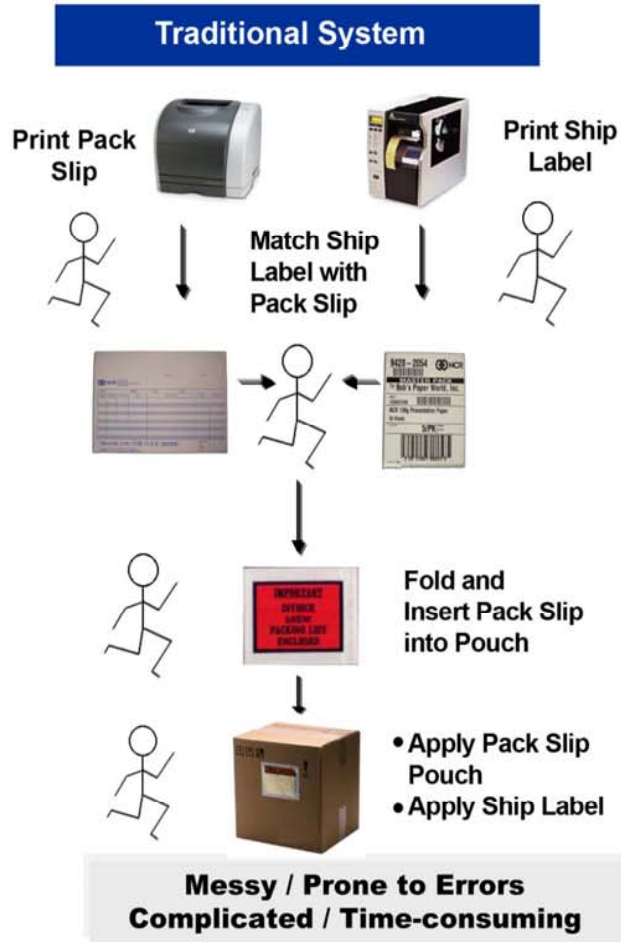
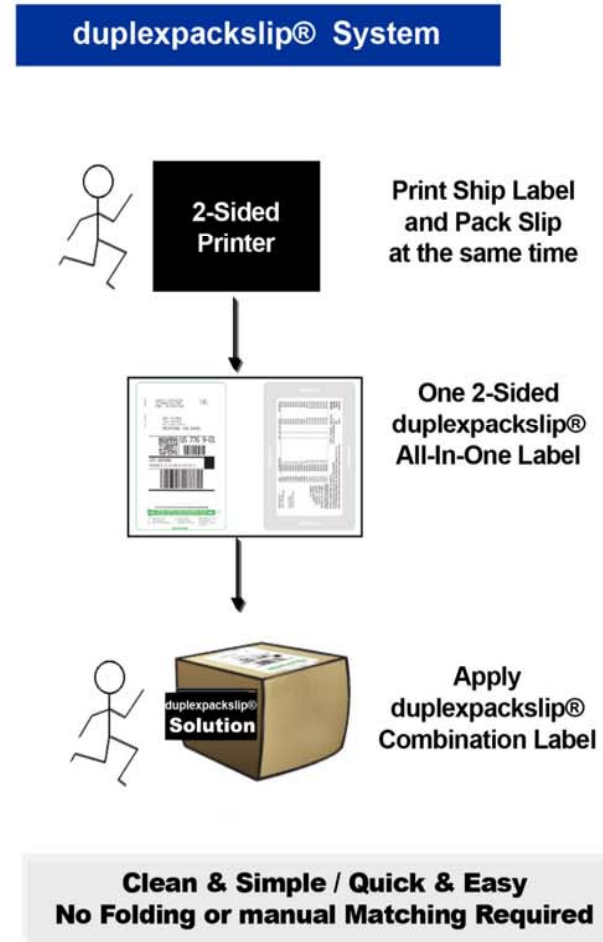


Process Flow



Estimated Traditional System Total Cost
\$218.62/M



Estimated duplexpackslip® System Total Cost
\$102.13/M

Details on Next Page

**COST COMPARISON
TRADITIONAL SYSTEM VS DUPLEXPACKSLIP SYSTEM**

All figures are estimated

TRADITIONAL SYSTEM		DUPLEXPACKSLIP SYSTEM	
Consumables:		Consumables:	
A) 4x6 Shipping Label	\$ 9.00/M	A) 6x8 Duplexpackslip	\$51.00/M*
B) Pouch	\$17.00/M	(direct thermal ship side)	
C) 8.5x11 paper	\$10.00/M	B) Thermal ribbon	
D) Laser toner and Maintenance	<u>\$25.00/M</u>	(packing slip side)	<u>\$ 6.00/M*</u>
Consumables Total	\$61.00/M	Consumables Total	\$57.00/M
Traditional Labor at 35 seconds per box	\$157.62/M	Duplexpackslip Labor at 10 Seconds per box	\$45.13/M
Total Cost Traditional System	\$218.62/M	Total Cost Duplexpackslip System	\$102.13/M

OVER 50% SYSTEM COST SAVINGS BY USING DUPLEXPACKSLIP HAND APPLY

**AUTO APPLY (TwinPrint LPA) WILL MAKE THE SAVINGS EVEN GREATER
AS IT ELIMINATES LABOR.**

*Ballpark pricing (quantity and construction play a big factor) on traditional label stock with thermally coated shipping label and thermal ribbon for packing slip side. You can eliminate the packing slip side ribbon with 2ST™ thermal print media with thermally coated face and thermally coated liner.

40 SECOND DOCUMENTED ZEBRA TECHNOLOGIES PACKING LIST POUCH TIME STUDY

<http://www.zebra.com/anim/Z-Slip/> To view, key in exactly as shown (intentionally not linked).

40 second Zebra time study is for Packing Slip and Pouch only, not Shipping Label as well.

35 SECONDS IS MY CONSERVATIVE TIME STUDY ESTIMATE FOR AFFIXING 4X6 SHIPPING LABEL, FOLDING 8.5X11 PACKING SLIP, INSERTING INTO POUCH AND AFFIXING TO CARTON.

35 seconds x 1,000 boxes is 35,000 seconds, divided by 3,600 seconds per hour, requires 9.7 man hours X \$16.25 labor burden factor, totals **\$157.62** in labor per 1,000 boxes shipped.

Hand Applying duplexpackslip will shorten time to about 10 seconds per box (saving 25 seconds per box). 10 seconds x 1,000 boxes is 10,000 seconds, divided by 3,600 seconds per hour, requires 2.8 man hours x \$16.25 labor burden factor, totals **\$45.13** in labor per 1,000 boxes shipped using duplexpackslip.

Saving 25 seconds of labor per box x 1,000 boxes is 25,000 seconds saved, divided by 3,600 seconds per hour, saves 7.0 man hours x \$16.25 labor burden factor, totals \$113.75 labor saved per 1,000 boxes shipped by using duplexpackslip.